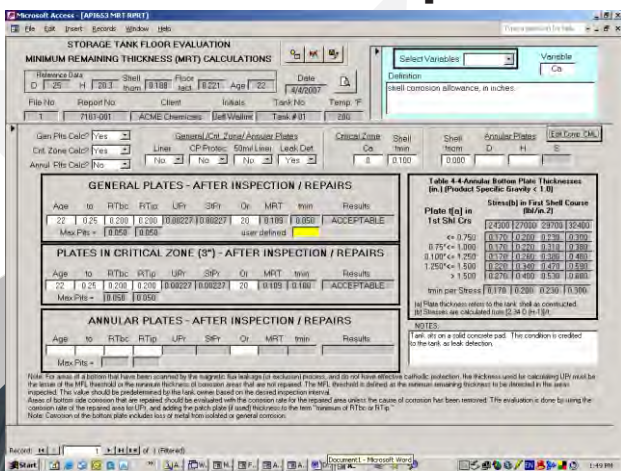


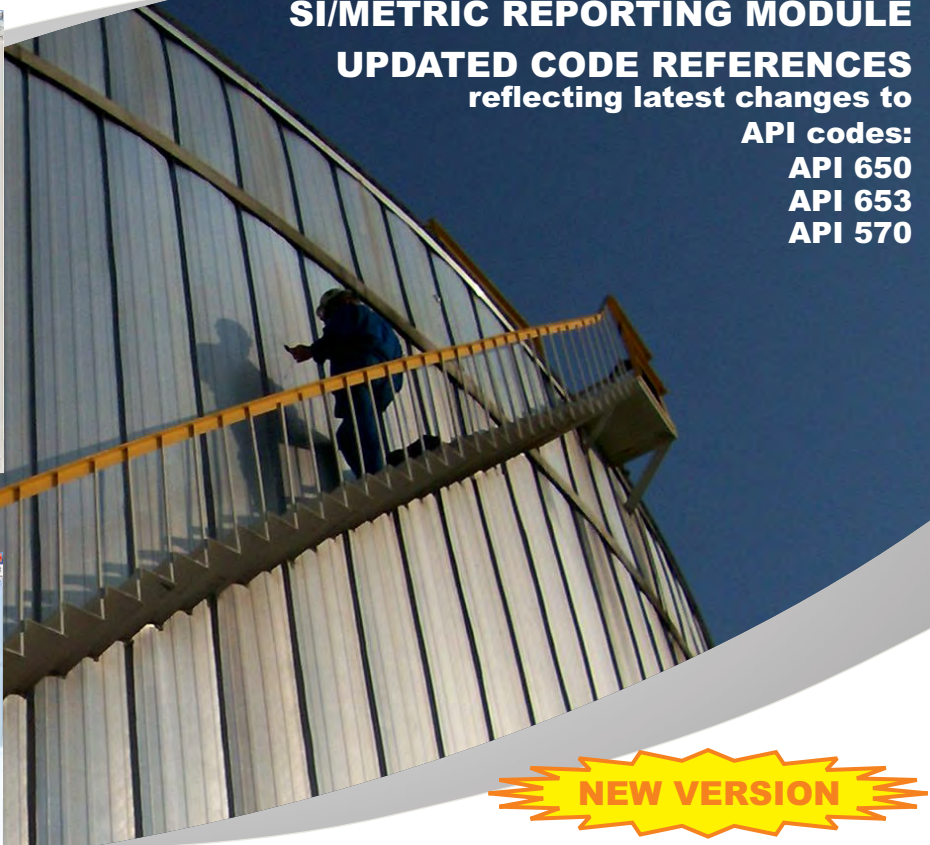
API 653 INSPECTORS TOOLBOX 3.0.1

Includes API 570 Pipe Module

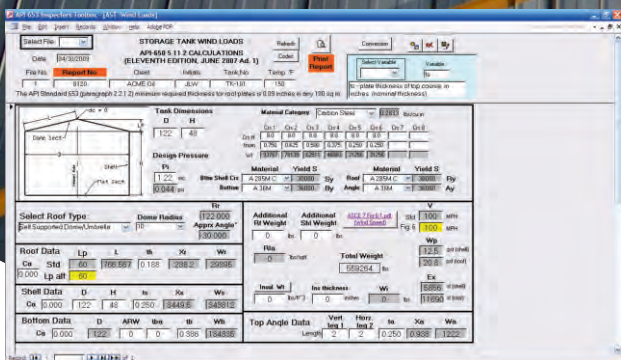


SI/METRIC REPORTING MODULE
UPDATED CODE REFERENCES
 reflecting latest changes to

API codes:
API 650
API 653
API 570



Tank Floor MRT Evaluation



NEW VERSION

API 653 INSPECTORS TOOLBOX V3.0.1

WIND LOADS Calculation

WHAT'S NEW IN VERSION 3.0:

1. Added API-570 Piping Module (same format as API-653 Module)
 - a. Subject Text Windows
 - b. Report Builder
 - c. Independent calculations
 - d. Field Forms
 - e. Hydrostatic Testing
2. New WIND LOADS calculation
3. Updates to calculations to reflect latest code changes and minor automations to the following calculations:
 - a. Appendix M Calculations – auto-select Ratio M-1 Value and included the fill height calculations in the report
 - b. Appendix F Calculations – code updates for condition specific evaluations
 - c. Added fill height calculations to the shell course in the Report Builder and Independent calculations
 - d. Color coded calculation results for cautionary conditions (orange) and expired conditions (red)
 - e. Corrected error and added "Edition" to the Table 4-2 for joint efficiencies

4. Added import/export feature for transferring reports from one program/PC (i.e. field inspectors PC) to another (i.e. office report writers PC)

Data analysis and reporting is made simple and easy with the API 653 Inspectors Toolbox, an integrated suite of software tools. The API 653 Inspectors Toolbox can be used by inspectors in the field to complete timely reports on site. Alternatively, the API 653 Inspectors Toolbox provides a series of data gathering templates that can be used by field inspectors who can then hand off the data to others for analysis and reporting, thus allowing this function to be centralized and made more efficient.

With the API 653 Inspectors Toolbox, data analysis and reporting can be:

- Made more accurate
- Made more comprehensive
- Presented in a more professional manner
- Completed in minutes rather than hours or days

The API 653 Inspectors Toolbox allows you to store, retrieve, and transport the data and reports electronically as needed.

Industry Leader in Pipeline Software Tools **TECHNICAL TOOLBOXES**

API 653 INSPECTORSTOOLBOX 3.0.1

API 653 Inspectors Toolbox helps you to find information quickly via a series of icons and tabulated text windows. The subject tabs of the text widows and icons help to guide the user to the desired information page through a topical approach. The tabulated text windows are designed to facilitate quick access to information that an Inspector or Reliability Engineer may need in response to questions or inspection finding requiring timely judgment calls.

The subject matter **analysis** is separated into a structured step-by-step process (Shell, Fixed Roof, Floor, Shell Nozzles, etc.). These component text windows have subsets of pages addressing the various disciplines related to assessing the degree of degradation and other discrepancies. The disciplines include Design Criteria, Inspection Guidelines, Repair Specifications for each of the components, etc.

The API-653 Inspectors Toolbox icons are linked to the most commonly associated Codes (API-650, API-653, ASME V, et) to provide quick access to those codes when needed. No laboring or searching, a "Codes" icon will navigate you to the appropriate API, ASME and other associated codes as well.

Icons also provide quick access to the work modules (such the Report Builder, Calculations, Engineering Specs, Hydro Testing, Repair Specs, etc.). Online help and documentation is provided.

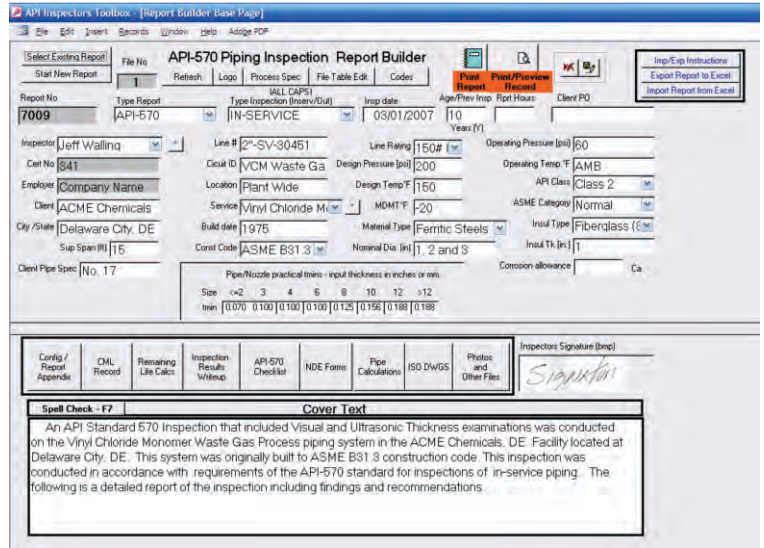
Price: \$995/user/year

Special-priced first year Corporate License Available

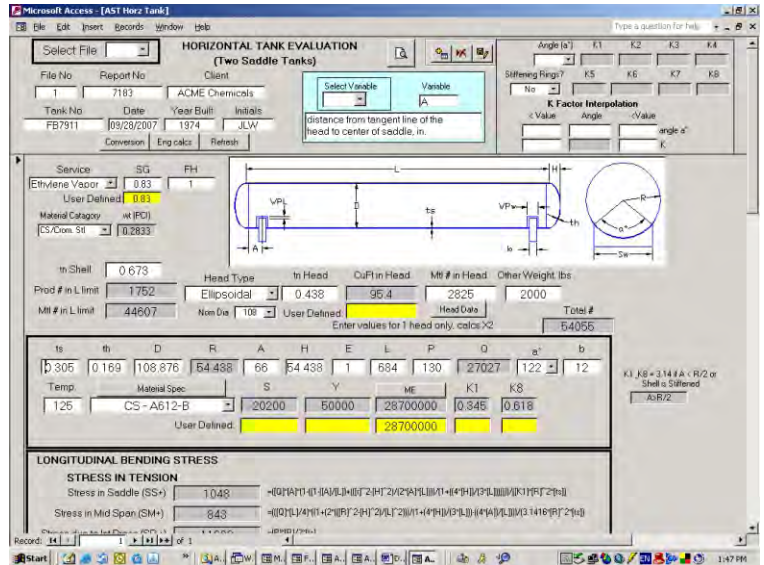
For more information contact:

Technical Toolboxes

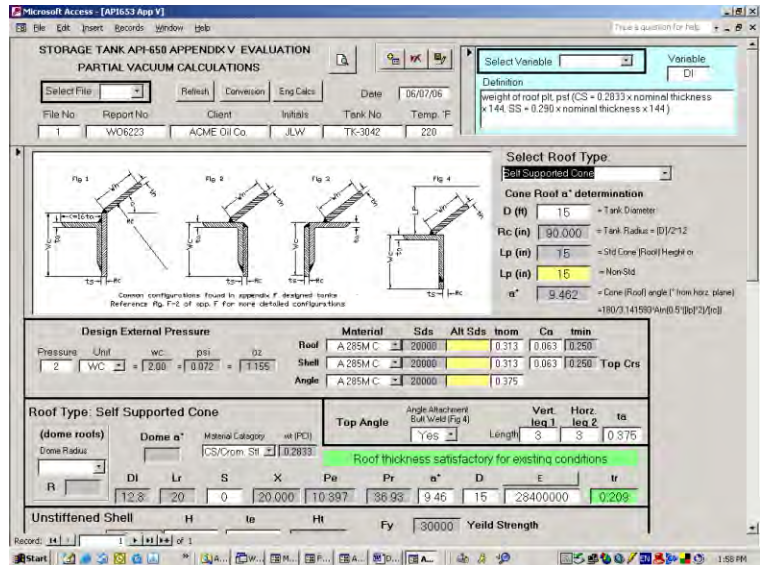
P.O. Box 980550
Houston, TX 77098
(713) 630-0505
(713) 630-0560 fax
sales@ttoolboxes.com
www.ttoolboxes.com



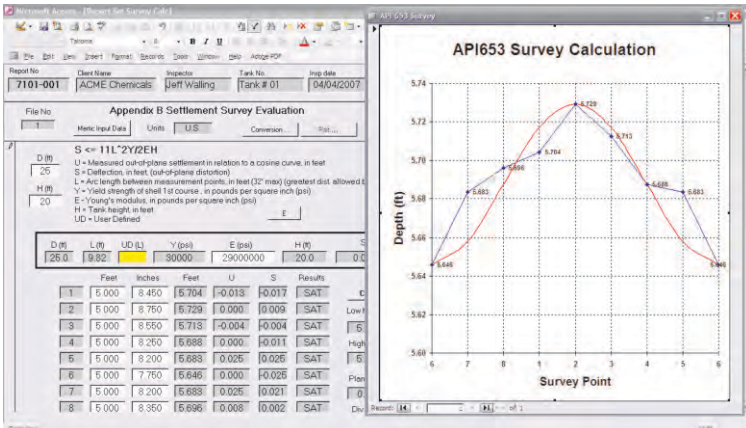
Report Builder Base Page



Horizontal Tank Calculations



Appendix V Evaluation



Automated Shell Settlement

713-630-0505 ↪ www.ttoolboxes.com

